

# SC616C

## Micro Type Load Cell

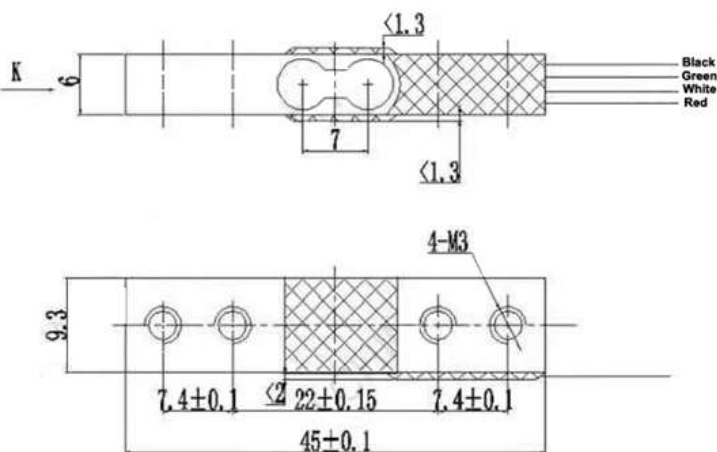
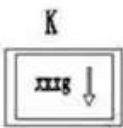


**Application:** electronic scale, kitchen scale, baby scale, smart coffee machine, smart bottle or other small force test.

### Specification:

<b>Capacity</b>	300g, 500g, 750g, 1kg, 2kg, 3kg, 5kg
<b>Comprehensive error</b>	0.05 %F·S
<b>Accuracy</b>	0.05%F·S
<b>Output sensitivity</b>	300g: 0.7±0.15mV/V 500g-750g: 0.8±0.15 mV/V 1kg-5kg: 1.0±0.15 mV/V
<b>Non-linearity</b>	0.05 %F·S
<b>Repeatability</b>	0.05 %F·S
<b>Hysteresis</b>	0.05 %F·S
<b>Creep</b>	0.1%F·S/3min
<b>Zero output</b>	± 0.1 m V/V
<b>Temp. effect on zero</b>	0.2 %F·S/10° C
<b>Temp. effect on span</b>	0.05 %F·S/10° C
<b>Input resistance</b>	1000 ± 10 Ω
<b>Output resistance</b>	1000 ± 10 Ω
<b>Insulation resistance</b>	≥ 2000 MΩ
<b>Excitation voltage</b>	3~10VDC
<b>Operating temp.</b>	-10~+40° C
<b>Safe overload</b>	120% F·S
<b>Ultimate overload</b>	150% F·S
<b>Cable length</b>	Φ0.6 x 110 mm
<b>Four corner error</b>	±0.1%F·S
<b>Material</b>	Aluminum alloy
<b>Connecting cable</b>	Φ0.8x200mm
<b>Unit weight</b>	7g/unit
<b>Package</b>	1000 units/ carton

**Size: mm**



### Wiring

