

SC4810

Column Type Load Cell



Application: Hopper scale, testing machine and other weighing scales.

Specification:

10T, 20T, 30T, 40T, 60T,
70T, 100T, 150T, 200T,
300T

Capacity

Rated output 2.0±0.004mV/V

Accuracy class C1: 0.05%F-S
C2: 0.03%F-S

Combined error ≤± 0.030 %F-S

Creep 0.026 %F-S/30min

Temp. effect on sensitivity 0.0015%F-S/°C

Temp. effect on zero 0.0026%F-S/°C

Zero balance ±1.0 %F-S

Input resistance 670±10 Ω

Output resistance 605±5 Ω

Insulation resistance 5000MΩ(50V)

Excitation voltage 10-18V

Compensated temp. range -10~+40° C

Operating temp. range -35~+80° C

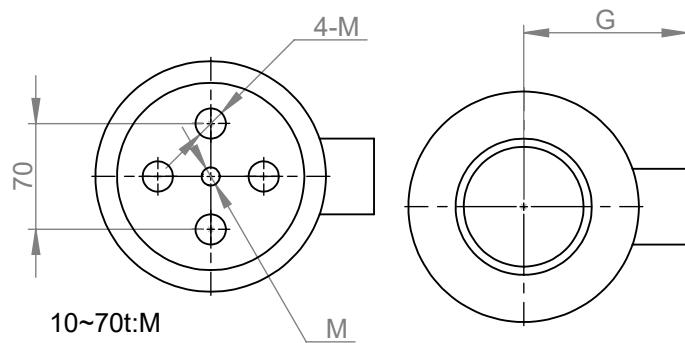
Safe overload 150%F-S

Ultimate overload 300%F-S

Load cell material Alloy steel
Stainless steel

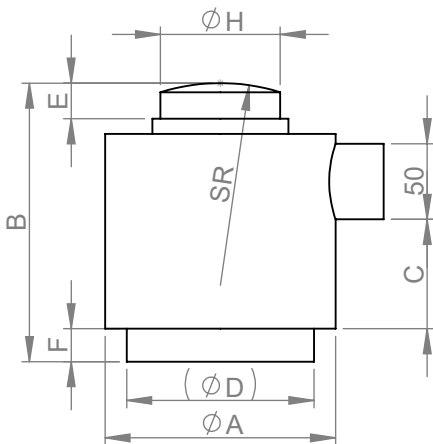
Connecting cable 10-30tΦ6.3x13m
40-300tΦ6.3x20m

Size: mm



10~70t:M

100~300t:4-M



Capacity	A	B	C	D	E	F	G	H	SR	M
10t-30t	76	82.5	12	58	12	1.8	64	31.8	152	M12x1.75 depth11
40t,60t,70t	105	127	34	82	12	11	87	58.7	152	
100t,150t,200t	152.4	184.2	72.3	123.8	23.6	21.8	108.2	79.2	432	4-M20X2.5 depth20
300t	152.4	184.2	72.3	123.8	23.6	21.8	108.2	92	432	

Wiring

