

SC219

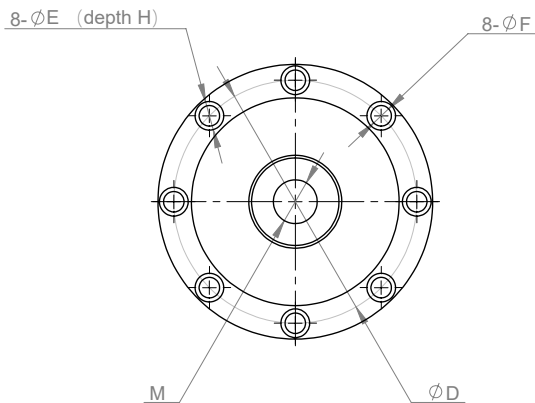
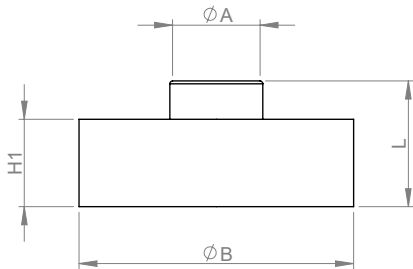
Pancake Type Load Cell



Application: Electronics weighing equipment, truck scales, hopper scales.



Size: mm



Capacity		A	M	L	H1	B	D	E	F	H
5-10klbs	2-5t	34	M16X1.5	46	32	105	88.9	10.5	7.5	9.2
25-50klbs	10-25t	41	M32X1.5	53	47	122	101.7	14	9	10.5
100klbs	50t	51	M40X1.5	57.6	51	143	117	17	10.5	16
200klbs	100t	76	M64X3	83	70	200	162.6	20	13	18
440klbs	200t	120	M90X3	125	120	306	264	32	22	26
660klbs	300t	150	M120X3	185	180	350	296	38	26	32

Specification:

Capacity	0-200ton-300ton 0-5klbs-660klbs
Rated output	2.0±0.04 mV/V
Accuracy class	C1: 0.05% F-S C2: 0.03% F-S
Combined error	≤± 0.030% F-S
Creep	0.02% F-S/30min
Temp. effect on sensitivity	0.0016% F-S/°C
Temp. effect on zero	0.005% F-S/°C
Zero balance	±1.0% F-S
Input resistance	725±8 Ω
Output resistance	700±5 Ω
Insulation resistance	5000 MΩ(50V)
Excitation voltage	8~15V
Compensated temp. range	-10~+40°C
Operating temp. range	-35~+80°C
Safe overload	150% F-S
Ultimate overload	200% F-S
Load cell material	Alloy steel Stainless steel
Connecting cable	2-25TΦ5.7x8m 40-300TΦ5.7x13m

Wiring

