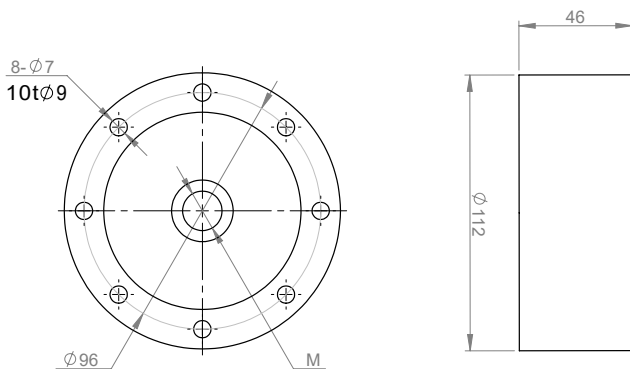


SC218C

Pancake Type Load Cell

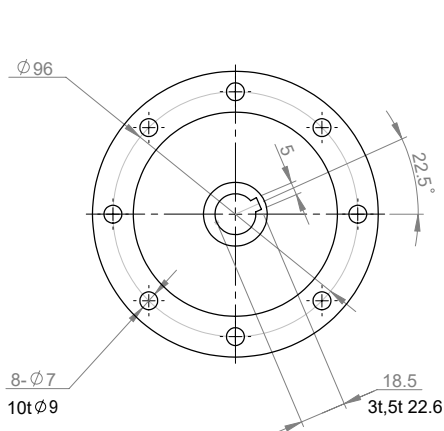


Size: mm



Capacity	M
1t,2t	M16
3t,5t	M20
10t	M24X2

Threaded hole



Through hole

Application: Electronics weighing equipment, truck scales, hopper scales.

Specification:

Capacity	1T, 2T, 3T, 5T, 10T
Rated output	2.0±0.004 mV/V
Accuracy class	C1: 0.05%F·S C2: 0.03%F·S
Temp. effect on sensitivity	0.0016%F·S/°C
Temp. effect on zero	0.002%F·S/°C
Input resistance	365±8 Ω
Output resistance	350±5 Ω
Excitation voltage	10~18V
Compensated temp. range	-10~+40° C
Operating temp. range	-35~+80° C
Load cell material	Alloy steel
Connecting cable	Φ5.7x6m

Wiring

