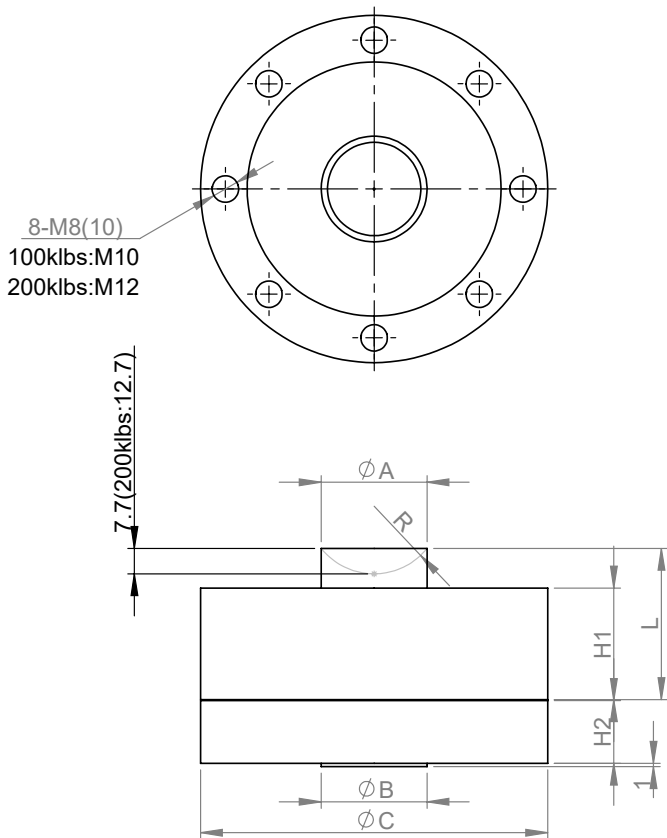


SC218

Pancake Type Load Cell



Size: mm



Capacity		A	R	L	H1	H2	C	B
5-10kpbs	2-5t	32	16	46	34	19	105	32
25-50kpbs	10-25t	40.6	22.2	53	47	19	121	32
100kpbs	50t	51	22.6	57.6	51	29	141	32
200kpbs	100t	76	44.2	83	70	42	200	51

Application: Electronics weighing equipment, truck scales, hopper scales.

Specification:

Capacity	5kpbs-200kpbs 2ton-100ton
Rated output	2.0±0.04mV/V
Accuracy class	C1: 0.05%F·S C2: 0.03%F·S
Combined error	≤± 0.030 %F·S
Creep	0.016 %F·S/30min
Temp. effect on sensitivity	0.0016%F·S/° C
Temp. effect on zero	0.003%F·S/° C
Zero balance	±1.0 %F·S
Input resistance	365±10 Ω
Output resistance	350±3 Ω
Insulation resistance	5000MΩ(50V)
Excitation voltage	8~15V
Compensated temp. range	-10~+40° C
Operating temp. range	-35~+80° C
Safe overload	150 %F·S
Ultimate overload	200%F·S
Load cell material	Alloy steel Stainless steel
Connecting cable	5-25kpbs Φ5.7x8mm 5-200kpbs Φ5.7x13mm

Wiring

