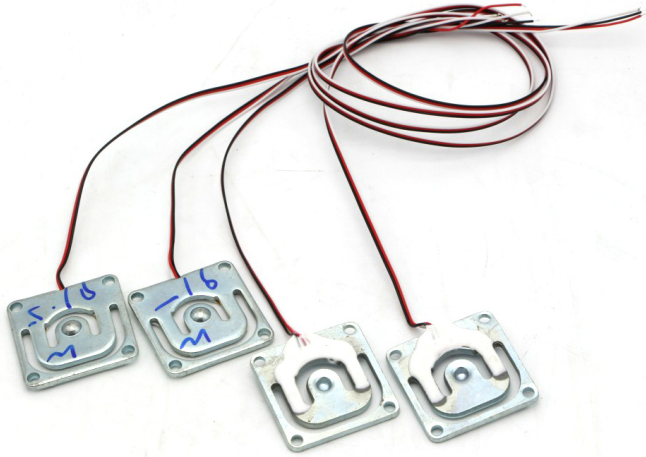
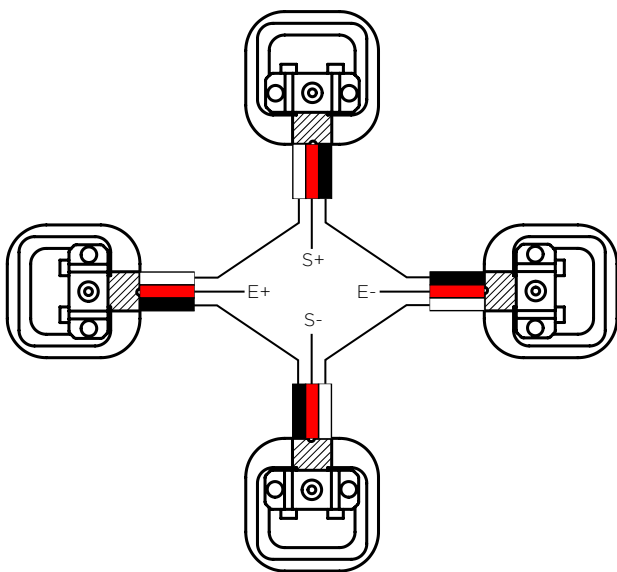
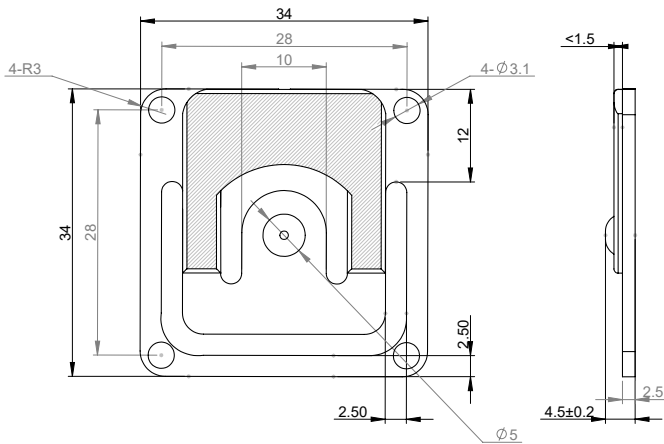


# SC134

## Half Bridge Micro Load Cell



Size: mm



Type: Half bridge load cell, 3 wire, 4 units per set.  
Application: Kitchen scale, body scale and other weighing devices.

### Specification:

Rated capacity	10kg,20kg,30kg,50kg,
Accuracy	0.05% F-S
Zero output	±0.5mV/V
Output sensitivity	0.8±0.2mV/V
Linearity	0.05% F-S
Repeatability	0.05% F-S
Hysteresis error	0.05% F-S
Creep	0.05% F-S /1min
Temp. effect on span	±0.1% F-S /10° C
Temp. effect on zero	±0.2% F-S /10° C
Input resistance	1000±10Ω
Output resistance	1000±10Ω
Insulation resistance	≥2000MΩ
Excitation voltage	3~10VDC
Operating temp. range	-10~+60° C
Material	Alloy steel
Unit weight	14g /unit
Safe Overload F-S	150% F-S
Ultimate overload	150±10kg

Wiring: W: White R: Red B: Black  
E+: Excitation + S+: Signal +  
E-: Excitation - S-: Signal -