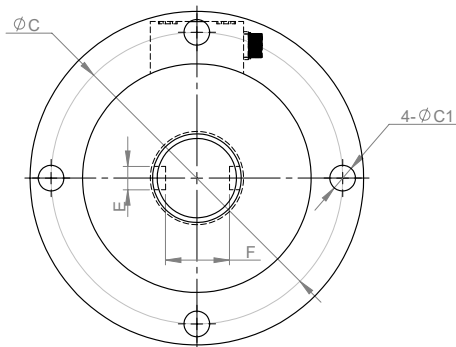
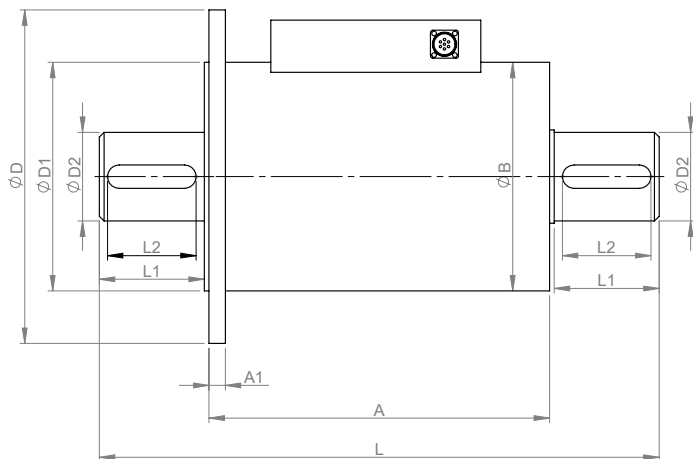


ZHKY901FS

Dynamic Rotary Torque Sensor



Size: mm



Specification:

Torque capacity	500N.m~2000N.m
Speed range	Max.8000RPM
Accuracy	0.5% F-S (Default)
	0.2% F-S (Optional)
	0.1% F-S (Optional)
Additional function	Angle Measurement (Rotary Encoder)
Operating voltage	±15 VDC
Operating temp. range	0~50° C
Frequency response	100μs
Output signal	0-12V square wave
	zero torque: 10KHz
	Clockwise Full scale: 15KHz Anti-Clockwise Full scale: 5KHz
Cable connection	Load current: <10mA
	Red: Exc +
	Black: Exc -
	Green: Signal + White: Signal -

N.m	L	L1	L2	ØD	ØD1	ØD2	A	A1	ØB	ØC	ØC1	E	F
500N.m	240	45	38	143	98	38	146	7	98	125	11	10	28
1K~2KN.m	255	70	60	143	118	55	155	7	118	125	11	16	43