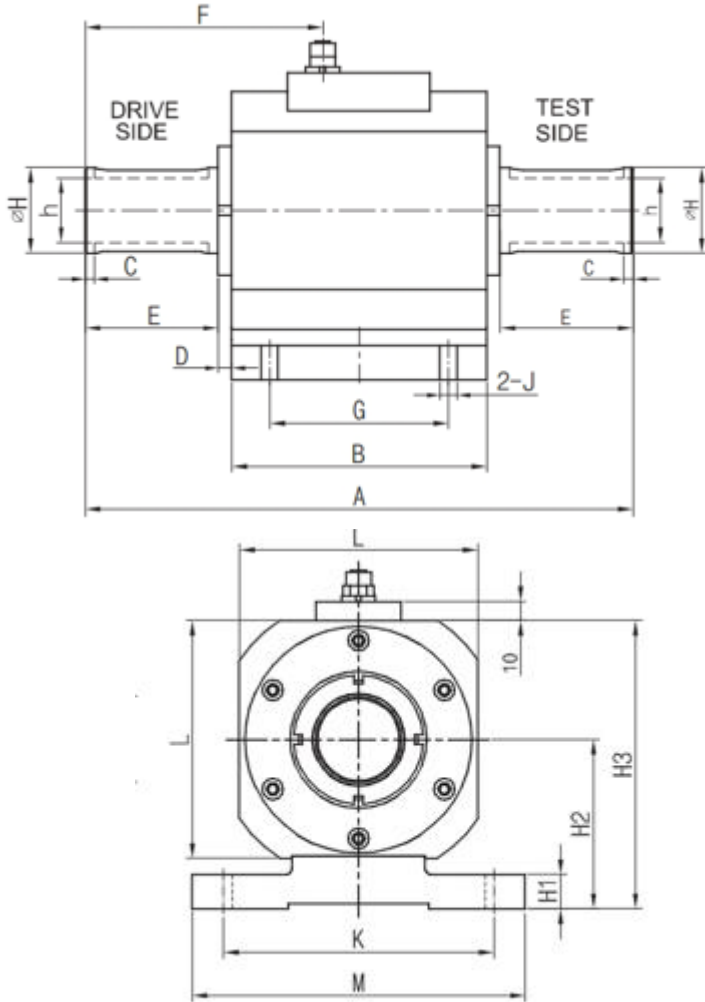


ZHKY2051

Dynamic Rotary Torque Sensor



Size: mm



Type: Non-Contact Torque Sensor

Application: Rotating system, engine, crankshaft, gearbox, transmission, rotor, bicycle crank cap torque tester.

Optional: On-board display

Specification:

Torque capacity	5N.m ~5000N.m
Excitation voltage	Default: ±15 VDC (frequency out) Option: 24VDC (voltage/current out)
Torque signal output	Default: 5~15kHz (12V, 10kHz Zero) Option: 4~20mA, 1~5V, 0-10V, ±10V
Speed range	0~8000 RPM (Varies with capacity)
Speed signal output	Default: Pulse TTL Option: 4-20mA, 0-10V
Sampling frequency	200 samples/second
Accuracy	±0.3% F-S (Default) ±0.2% F-S (Optional) ±0.1% F-S (Optional)
Operating temp. range	0 ~ 50°C
Compensated temp. range	0 ~ 50°C
Safety overload	200%F-S
Material	Aluminum body Stainless steel shaft
Cable length	5 m with 8pin Connector
Cable connection	Red: Exc + Black: Exc - Green: Signal + White: Signal - (Varies with output type)

Capacity	A	B	C	D	E	F	G	H	h	J	K	L	M	H1	H2	H3
5-100	185	111	3.5	7	30	73.5	80	18	14.5	6.5	83	70	100	10	53.5	88.5
200-500	198	114	3	7	35	80	84	28	24	6.5	97	85	114	10	61	103.5
1K-2K	288	134	5	7	70	125	94	45	34	9	142	125	175	18	89	151.5
3K-5K	355	141	4	7	100	158.5	100	75	60	11	181	160	220	20	110.5	190.5