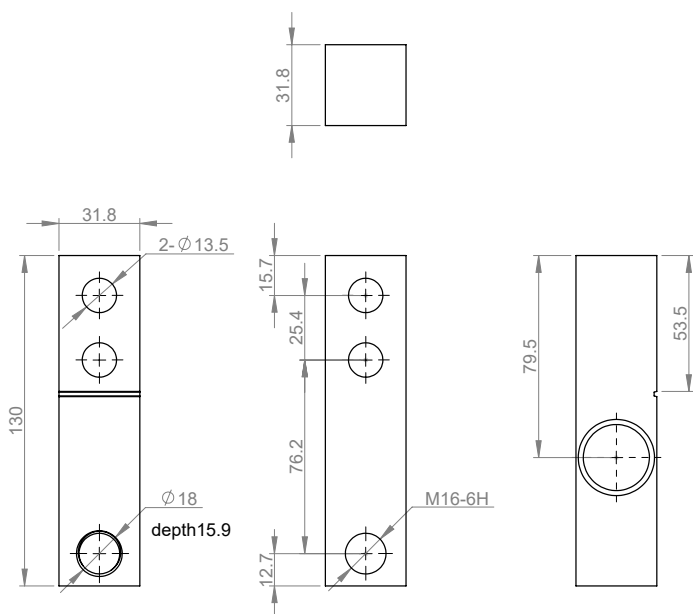


# SC8320C

## Shear Beam Type Load Cell



Size: mm



**Application:** Platform scale, floor scale, forklift scale and other weighing scales.

### Specification:

|                                    |  |
|------------------------------------|--|
| <b>Capacity</b>                    | 50kg, 100kg, 200kg, 250kg,<br>500kg, 1000kg, 2000kg,<br>3000kg |
| <b>Rated output</b>                | 2.0±0.004mV/V  |
| <b>Accuracy class</b>              | C1:0.05%F·S<br>C2:0.03%F·S                                     |
| <b>Combined error</b>              | ≤± 0.020 %F·S  |
| <b>Creep</b>                       | 0.02 %F·S/30min  |
| <b>Temp. effect on sensitivity</b> | 0.0016%F·S/° C   |
| <b>Temp. effect on zero</b>        | 0.002%F·S/° C  |
| <b>Zero balance</b>                | ±1.0 %F·S  |
| <b>Input resistance</b>            | 365±10 Ω   |
| <b>Output resistance</b>           | 350±3 Ω  |
| <b>Insulation resistance</b>       | 5000MQ(50V)  |
| <b>Excitation voltage</b>          | 5~12VDC  |
| <b>Compensated temp. range</b>     | -10~+40° C   |
| <b>Operating temp. range</b>       | -35~+80° C   |
| <b>Safe overload</b>               | 150 %F·S   |
| <b>Ultimate overload</b>           | 200%F·S  |
| <b>Load cell material</b>          | Alloy steel<br>Stainless steel                                 |
| <b>Connecting cable</b>            | Ø5.7 x2m   |

### Wiring

