

SC8320

Shear Beam Type Load Cell

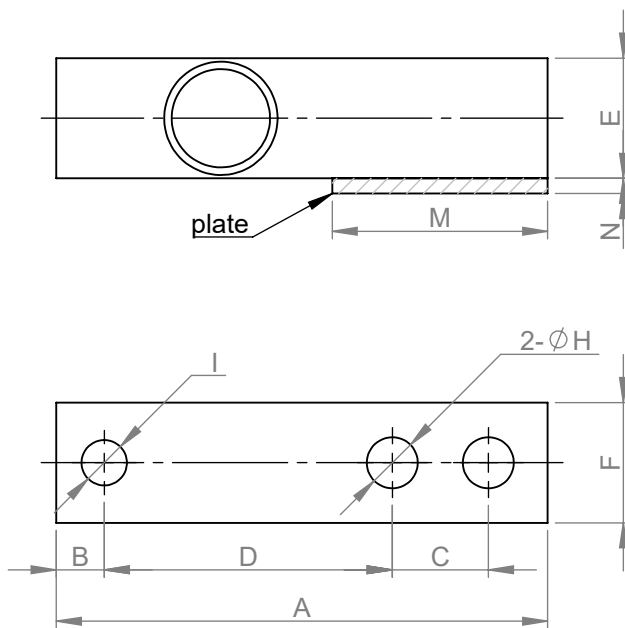


Application: Platform scale, belt scale, tank scale, silo scale, mixer scale, weighing pallet truck scale, on board scale.

Specification:

Capacity	0.05T,2T, 2.5T,5T,7T,10T
Rated output	3.0±0.04 mV/V
Accuracy class	C1: 0.05% F-S C2: 0.03% F-S
Combined error	≤± 0.030 %F-S
Creep	0.02% F-S/30min
Temp. effect on sensitivity	0.0016% F-S/°C
Temp. effect on zero	0.003% F-S/°C
Zero balance	±1.0% F-S
Input resistance	365±10 Ω
Output resistance	350±3 Ω
Insulation resistance	≥5000 MΩ(50V)
Excitation voltage	5~12VDC
Compensated temp. range	-10~+40° C
Operating temp. range	-35~+80° C
Safe overload	150% F-S
Ultimate overload	200% F-S
Load cell material	Alloy steel Stainless steel
Connecting cable	0.25-3TΦ5.7 x 3.5m 5-10TΦ5.7 x6m

Size: mm



Capacity	A	B	C	D	E	F	H	M	N	I
0.05-2t	130	12.7	25.4	76.2	31.8	31.8	∅ 13.5	57	4	M12X1.75
2.5-5t	171.5	19.1	38.1	95.3	38.1	38.1	∅ 19.8	76	6	M20X1.5
7.5-10t	222.2	25.4	50.8	120.6	50.8	50.8	∅ 26.2	108	6	M24X2.0

Wiring

