

SC602

Single Point Load Cell

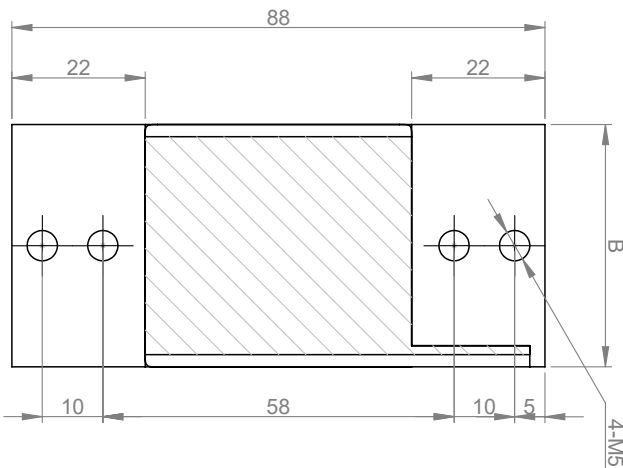
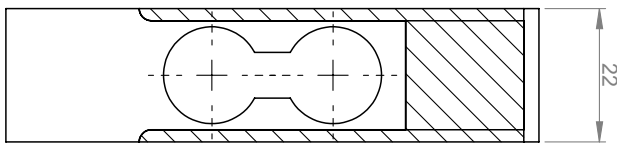


Application: Electronic scale, platform scale, pricing scale, test equipment.

Specification:

Capacity	3kg, 5kg, 6kg, 10kg, 15kg, 20kg, 30kg, 40kg 50kg, 60kg, 100kg
Rated output	2.0±0.2 mV/V
Accuracy class	0.02% F-S
Comprehensive error	±0.03% F-S
Creep	±0.02% F-S/30min
Non-linearity	±0.03% F-S
Hysteresis error	±0.03% F-S
Repeatability	±0.02% F-S
Zero balance	±1.5% F-S
Temp. effect on sensitivity	±0.02% F-S/10° C
Temp. effect on zero	±0.03% F-S/10° C
Input resistance	405±10 Ω
Output resistance	350±3 Ω
Insulation resistance	≥ 5000 MΩ
Excitation voltage	9~ 12 VDC
Compensated temp. range	-10~+40° C
Operating temp. range	-20~+60° C
Safe overload	120% F-S
Ultimate overload	150% F-S
Load cell material	Aluminum alloy

Size: mm



Capacity	2kg~6kg	10kg~50kg	60kg~100kg
B	20	30	40

Wiring

