

SC132

Micro Type Load Cell

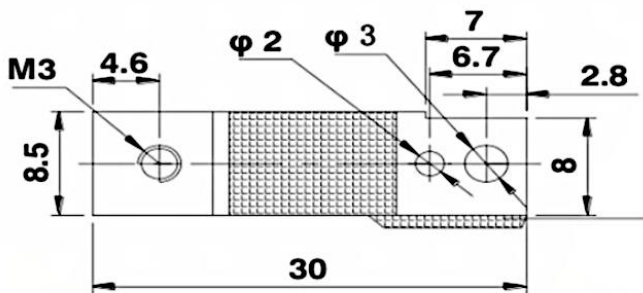
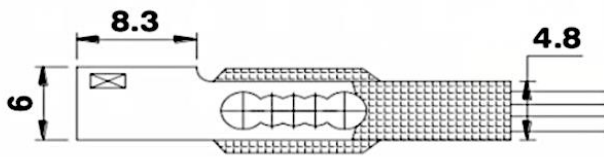


Application: Kitchen scale, body scale, baby scale, platform scale, pricing scale, force test equipment, beehive scale.

Size: mm

Specification:

Capacity	2kg
Rated output	0.7 ± 0.15 mV/V
Accuracy	0.1 %F·S
Comprehensive error	0.1 %F·S
Creep	± 0.1 %F·S/3min
Non-linearity	± 0.1 %F·S
Hysteresis error	± 0.1 %F·S
Repeatability	± 0.1 %F·S
Zero output	± 0.1 mV/V
Temp. effect on sensitivity	0.05% F·S/10° C
Temp. effect on zero	2%F·S/10° C
Insulation resistance	≥ 2000 M Ω
Temp. range	-10~+40° C
Excitation voltage	≤ 6 VDC
Safe overload	150 %F·S
Load cell material	Aluminum alloy
Connecting cable	$\Phi 0.65 \times 100$ mm



Wiring:

